

Nordic Partnership Initiative in Peru

Ash Sharma, NEFCO

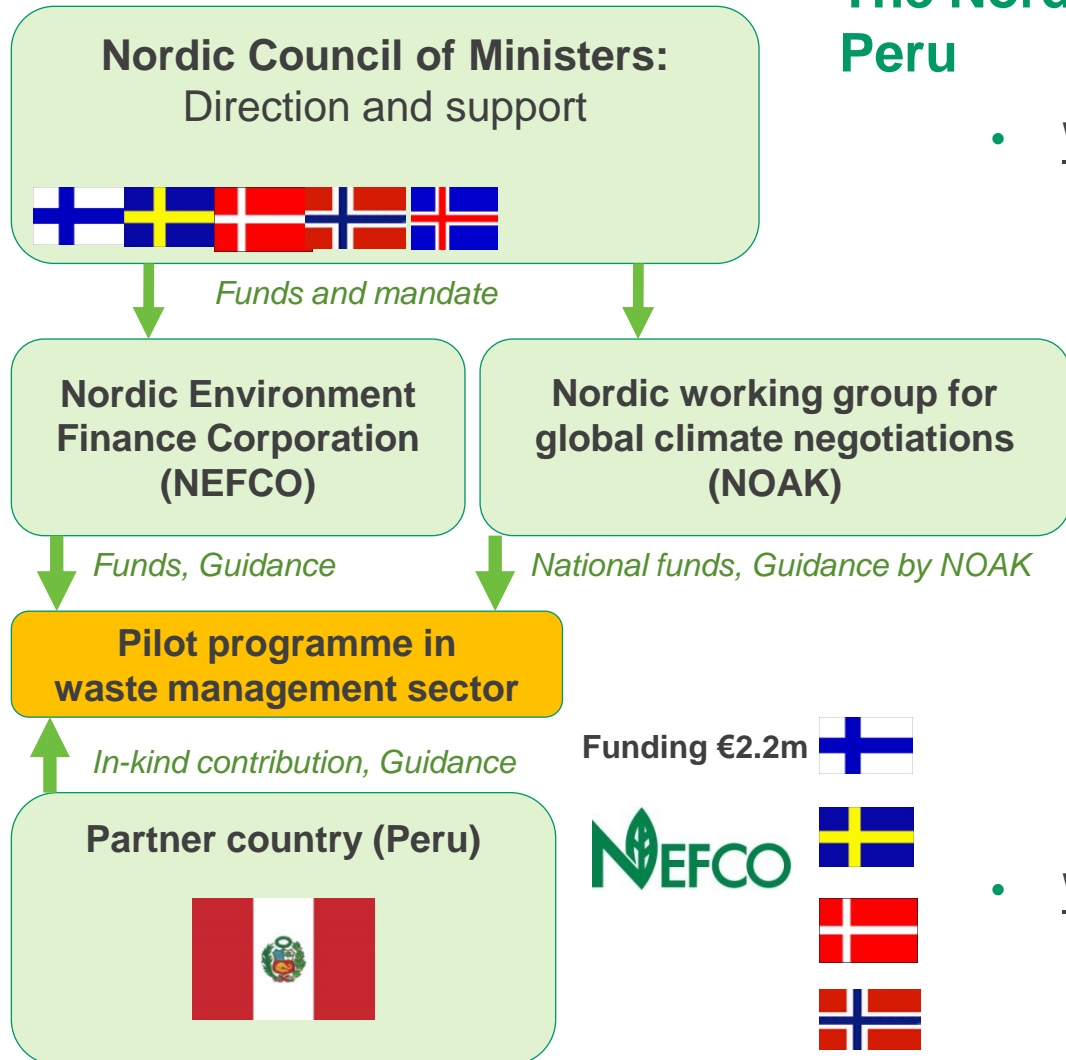
Nordic Council of Ministers Side Event, 8th
December 2011

Durban, South Africa

Sector Context

- Daily production of 17 000 tpa, of which only 2/3 collected and treated at all, only 20% of total disposed of sanitary landfills (8)
- Emissions from solid waste management (landfills and open dumps) 7,3 Mt p.a., expected to grow to 11 Mt under BAU
 - accounts for 6% of national GHG and rising
- Environmental and public health issues include:
 - methane emissions
 - severe groundwater contamination
 - toxic chemicals and harmful substances released to rivers and coasts
 - large informal sector
 - open incineration results in further environmental degradation
- Design of effective waste strategy hampered by lack of data on quantities and types of wastes (new study being completed)
- Significant investment programme for new facilities required, pilot will assist with master planning

The Nordic Partnership Initiative in Peru



- We aim at:
 - **learning in practice** how broad and up-scaled support can effectively be matched with comprehensive host country mitigation plans
 - **piloting NAMAs** in selected broad sectors of the economy with a subcomponent of **testing design of new market-based mechanisms**
 - providing **useful input to UNFCCC negotiations**
 - **encouraging others** to take similar actions
- We do *not* aim at:
 - developing or replacing CDM projects
 - purchasing credits

Peru Programme Objectives

- The overarching aim is to improve Peru's readiness to benefit from international climate finance and/or the carbon market for supporting up-scaled mitigation action in the waste sector
- It shall address **gaps in data availability and quality and technical and institutional capacity, as well as relevant technical, financial and other barriers to up-scaled mitigation and private sector engagement**, including:
 - Collection of updated data on emissions and emission reduction potential;
 - Capacity to oversee and manage waste streams;
 - Capacity to generate and implement waste strategy across different levels of Government and addressing the private sector;
 - Identification of barriers to mitigation action, proposals for addressing them;
 - MRV system of international standard;
 - Identification of appropriate support instruments for mitigation action, including potential sources of finance, funding, requirements, support criteria ;
 - Relevant institutional arrangements, capacity building and training.

Contact

NEFCO Carbon Finance & Funds

Mr. Ash Sharma,
Vice President,
Head of Department

Nordic Environment Finance Corporation (NEFCO)
P.O. Box 249, FI-00171 Helsinki, FINLAND
Phone: +358 10 618 003
Fax: +358 9 630 976
Email: carbonfinance@nefco.fi
Website: www.nefco.org/cff